

**TRAFFIC GENERAL CONSTRUCTION NOTES**

THE STATIONS AND LOCATIONS OF THE SIGN PLACEMENT, AS SHOWN ON THE PLAN SHEETS, ARE APPROXIMATE. EXACT STATIONS AND LOCATIONS SHALL BE DETERMINED BY THE CONTRACTOR SO THAT THE SIGN IS INSTALLED IN ACCORDANCE WITH DEPARTMENT STANDARDS AND THE MUTCD IN ORDER TO PROVIDE OPTIMUM VISIBILITY TO THE ONCOMING/APPROACHING MOTORIST. IF A PROPOSED LOCATION CONFLICTS WITH OTHER SIGNS, UTILITIES OR OTHER ROADWAY FEATURES, THE ENGINEER SHALL BE NOTIFIED.

ALL TEMPORARY TRAFFIC CONTROL DEVICES SHALL MEET ODOT'S, "QUALITY STANDARDS FOR TEMPORARY TRAFFIC CONTROL DEVICES".

POST LENGTHS SHOWN ON SIGN SUMMARY ARE APPROXIMATE. EXACT LENGTH SHALL BE DETERMINED BY FIELD SURVEY BY THE CONTRACTOR.

ALL SIGNS SHALL BE REMOVED FROM THE POSTS IN A SALVAGEABLE MANNER FOR REUSE. CARE SHALL BE TAKEN DURING REMOVAL AND TRANSPORTING TO ALLEVIATE DAMAGE OF MATERIALS. THE CONTRACTOR IS RESPONSIBLE FOR ANY DAMAGE CAUSED DURING REMOVAL OF SIGNS, AND SIGN POSTS.

AFTER REMOVAL OF ANY SIGN FOOTINGS, THE HOLES SHALL BE FILLED WITH SOIL AND TAMPED AND SHAPED IN A MANNER APPROVED BY THE RESIDENT ENGINEER.

FOR NEW OR EXISTING GROUND MOUNTED SIGNS, MAXIMUM STUB POST PROJECTION ABOVE FOOTINGS/GROUND LINE SHALL BE 1 3/4" + 1/4". MAXIMUM FOOTING PROJECTION ABOVE GROUND LINE SHALL BE NO MORE THAN 2". SHOULD ADDITIONAL SOIL BE REQUIRED, THE RESIDENT ENGINEER WILL DESIGNATE AN AREA TO OBTAIN ADDITIONAL SOIL. ALL ASSOCIATED COSTS SHALL BE INCLUDED IN OTHER ITEMS OF WORK.

SYMBOLS AND LEGENDS ARE DIAGRAMMATIC ONLY AND LOCATIONS SHALL BE ADJUSTED FOR EXISTING FIELD CONDITIONS, BUT NO MAJOR ALTERATIONS OR RELOCATIONS WILL BE MADE WITHOUT FIRST CONSULTING WITH THE CHIEF TRAFFIC ENGINEER DIVISION AT (405) 521-2861.

THIS PROJECT SHALL BE CONSTRUCTED WITHOUT CLOSING THE EXISTING ROAD TO LOCAL AND THROUGH TRAFFIC. SEE O.D.O.T. STANDARDS AND DETAIL DRAWINGS FOR MAINTENANCE OF LOCAL AND THROUGH TRAFFIC.

ALL BROKEN CONCRETE, WASTE MATERIAL, AND DEBRIS SHALL BECOME THE PROPERTY OF THE CONTRACTOR, AND SHALL BE REMOVED FROM THE LIMITS OF THE PROJECT AND DISPOSED OF IN AN AREA APPROVED BY THE ENGINEER. NO PAYMENT WILL BE MADE FOR THE DISPOSAL OF THIS MATERIAL.

THE CONTRACTOR SHALL BE RESPONSIBLE FOR ANY DAMAGE HE MAY INFLICT TO THE EXISTING UNDERGROUND UTILITIES WITHIN THE PROJECT AREA AS A RESULT OF HIS DIGGING, TRENCHING, BORING, ETC... PRIOR TO DIGGING NEAR THE UTILITIES, THE CONTRACTOR SHALL CALL FOR A LIST OF ALL UNDERGROUND FACILITIES REGISTERED IN THE AREA OF CONSTRUCTION LISTED WITH THE FOLLOWING AGENCIES:  
THE "OKIE" NOTIFICATION CENTER 811 OR 1-800-522-6543 OR WWW.CALOKIE.COM OR THE LOCAL COUNTY CLERKS OFFICE.

THE ITEMS THAT ARE TO BE REMOVED AND/OR RESET SHALL BE HANDLED WITH CARE. THE CONTRACTOR SHALL BE RESPONSIBLE FOR ANY DAMAGE OCCURRING DURING THESE OPERATIONS.

THE CONTRACTOR SHALL PROVIDE A PERSON TO BE ON 24 HOUR CALL AS NEEDED AS DETERMINED BY THE ENGINEER. THIS PERSON SHALL HOLD A CURRENT CERTIFICATION FROM THE AMERICAN TRAFFIC SAFETY SERVICE ASSOCIATION (ATSSA) OR THE OKLAHOMA TRAFFIC ENGINEERING ASSOCIATION (OTEA) AS A TRAFFIC CONTROL TECHNICIAN OR TRAFFIC CONTROL SUPERVISOR.

ALL REGULATORY SIGNS SHALL HAVE HIGH INTENSITY SHEETING. THE HIGH INTENSITY SHEETING SHALL MEET THE REQUIREMENTS OF ASTM D4956-(LATEST REVISION) FOR TYPE III SHEETING.

ALL WARNING SIGNS SHALL HAVE FLUORESCENT YELLOW SHEETING. THE FLUORESCENT YELLOW SHEETING SHALL MEET THE REQUIREMENTS OF ASTM D4956-(LATEST REVISION) REQUIREMENTS FOR TYPE VIII SHEETING.

THE MANUFACTURER SHALL FURNISH A TYPE 'A' CERTIFICATION IN ACCORDANCE WITH ODOT STANDARD SPECIFICATIONS, LATEST EDITION, SUBSECTION 106.04. THE CERTIFICATION SHALL INCLUDE TEST RESULTS ON THE MATERIAL SUBMITTED FOR APPROVAL.

**TRAFFIC CONSTRUCTION PAY QUANTITY NOTES**

(TC-25) ALL CONSTRUCTION TRAFFIC CONTROL WILL BE IMPLEMENTED ACCORDING TO CONSTRUCTION PLANS, AND INSTALLED IN A MANNER APPROVED BY THE ENGINEER, IN ACCORDANCE WITH CHAPTER VI OF THE MANUAL ON UNIFORM TRAFFIC CONTROL DEVICES, (CURRENT EDITION), AND COMPLIANT WITH APPLICABLE O.D.O.T. STANDARD DRAWINGS. PRICE BID FOR THIS ITEM SHALL BE PAYMENT IN FULL FOR THE INSTALLATION, MAINTENANCE AND SUBSEQUENT REMOVAL OF ALL NECESSARY CONSTRUCTION TRAFFIC CONTROL DEVICES AND PAVEMENT MARKINGS REQUIRED FOR COMPLETION OF THE PROJECT.

(TC-84) ALL SIGNS AND BARRICADES, WHICH ARE SHOWN WITH TYPE "A" LIGHTS IN THE STANDARD DRAWINGS SHALL HAVE THE CORRESPONDING LIGHT ATTACHED DURING NON-DAYLIGHT HOURS. (NOTE FOR CONSULTANT OR DESIGNER: THIS NOTE SHALL BE USED WHEN TRAFFIC CONTROL IS A LUMP SUM PAY ITEM.)

(TS-34) 60 CONSTRUCTION CALENDAR DAYS WERE USED TO COMPUTE THE SIGN DAYS PAY ITEMS. THE AMOUNT OF CALENDAR DAYS USED TO COMPUTE THE SIGN DAY PAY ITEMS IS AN ESTIMATED QUANTITY ONLY, BASED ON THE CURRENT O.D.O.T. STANDARDS AND SUGGESTED CONSTRUCTION SEQUENCE FOR THIS PROJECT. THESE ESTIMATED SIGN DAY QUANTITIES MAY CHANGE AS THE PROJECTS CONSTRUCTION TRAFFIC CONTROL IS MODIFIED DURING CONSTRUCTION.

(TS-34) INCLUDED IN THIS PAY ITEM IS THE REMOVAL OF ANY EXISTING SIGNS TO BE REPLACED BY NEW ASSEMBLIES AND THE REMOVAL OF ANY EXISTING SIGNS THAT WILL BE IN CONFLICT WITH THE NEW ROADWAY OR NEW SIGNAGE.

**SPECIAL NOTES**

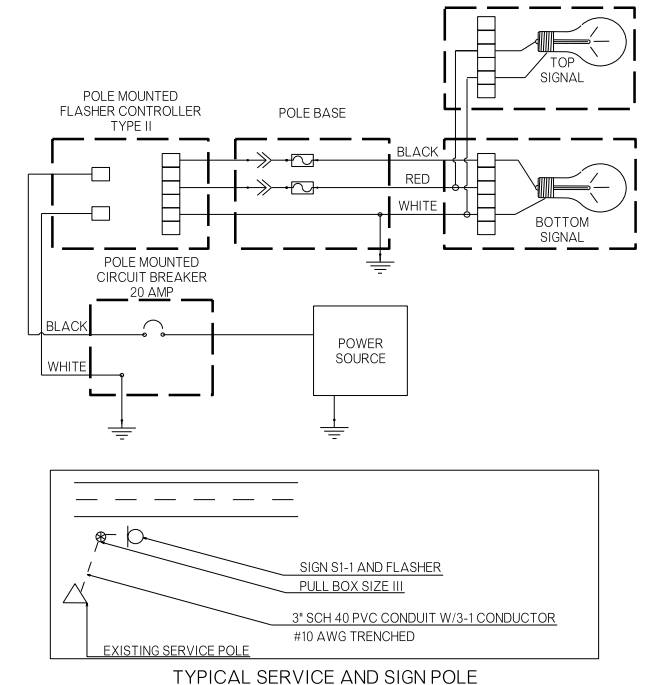
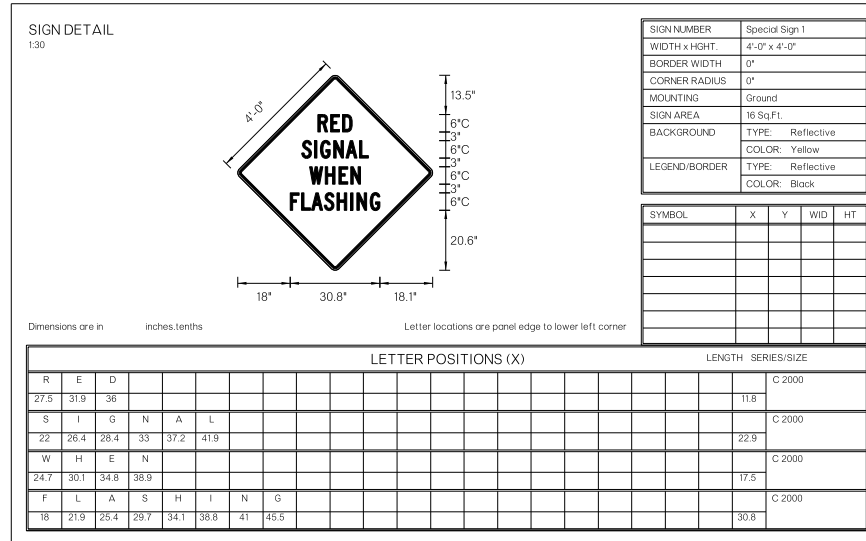
- (SP-1) PRICE BID FOR THIS ITEM SHALL INCLUDE ALL COST FOR THE SOLID STATE FLASHER CONTROLLERS (TYPE II) AND ALL HARDWARE ASSOCIATED WITH PROPERLY INSTALLING THE CONTROLLERS IN ACCORDANCE WITH STANDARD RWSF1-1-(LATEST REVISION).
- (SP-2) THIS PROJECT SHALL INCLUDE SIXTEEN (16) YELLOW 1 WAY 1 SECTION ADJUSTABLE LED SIGNAL HEADS, TYPE S-22, THE LED TRAFFIC MODULES, LENSES AND ALL ASSOCIATED MATERIAL AND EQUIPMENT SHALL CONFORM TO I.T.E. VEHICLE TRAFFIC CONTROL SIGNAL HEAD (V T C S H) STANDARDS IN EFFECT AT THE TIME THAT THE ORDER IS PLACED. LED HEADS SHALL BE CAPABLE OF OPERATING WITHOUT A REFLECTOR.
- (SP-3) PRICE BID FOR THIS ITEM SHALL INCLUDE ALL COST FOR THE SQUARE PEDESTAL CAST ALUMINUM BASE AND COLLAR AND ALL HARDWARE ASSOCIATED WITH PROPERLY INSTALLING THIS SIGN IN ACCORDANCE WITH STANDARD RWSF1-1-(LATEST REVISION).
- (SP-4) INCLUDED WITH THIS PAY ITEM SHALL BE THE STRUCTURAL CONCRETE AND REINFORCING STEEL FOR THE ASSEMBLY FOOTING AS WELL AS THE 4" GALVANIZED STEEL PIPE.
- (SP-5) ALL TRAFFIC SIGNAL EQUIPMENT REMOVED SHALL BECOME THE PROPERTY OF THE CONTRACTOR. THE CONTRACTOR SHALL NEATLY STACK SUCH REMOVED MATERIAL AT A LOCATION ON THE JOB SITE AS DIRECTED BY THE ENGINEER. THE PRICE BID SHALL INCLUDE THE REMOVAL OF ALL FOOTINGS BELOW GROUND LEVEL OR AS DIRECTED BY THE ENGINEER. FOOTINGS TO BECOME THE PROPERTY OF THE CONTRACTOR.
- (SP-6) ALL SIGNS REMOVED SHALL BECOME THE PROPERTY OF THE CONTRACTOR. THE CONTRACTOR SHALL NEATLY STACK SUCH REMOVED MATERIAL AT A LOCATION ON THE JOB SITE AS DIRECTED BY THE ENGINEER. THE PRICE BID SHALL INCLUDE THE REMOVAL OF ALL FOOTINGS BELOW GROUND LEVEL OR AS DIRECTED BY THE ENGINEER. FOOTINGS TO BECOME THE PROPERTY OF THE CONTRACTOR.
- (SP-7) CONTRACTOR SHALL REPLACE EXISTING CONTROLLER ON HARDESTY TO MATCH THE ECONOLITE ASC/3-2100 ON 45TH ST. OR APPROVED EQUIVALENT UNLESS THE CONTROLLER HAS ALREADY BEEN REPLACED.
- (SP-8) BOTH ODOT & THE CITY OF SHAWNEE SHALL BE PRESENT WHEN THE SIGNAL TIMING IS PROGRAMMED. CONTACT ODOT DESIGN ENGINEER TO COORDINATE.
- (SP-9) ALL SIGNS ARE TO BE CONNECTED TO AND DYNAMICALLY CONTROLLED BY THE EXISTING TRAFFIC SIGNAL CONTROLLERS AT THE SAME INTERSECTIONS, SO AS TO BE ACTIVATED BEFORE THE AMBER INDICATION AND END WITH THE END OF THE RED INDICATION FOR THAT APPROACH. THE DETERMINATION OF THE AMOUNT OF LEAD TIME IS TO BE APPROVED BY THE ENGINEER.
- (SP-10) THIS PAY ITEM TO BE USED AS REQUIRED BY THE ENGINEER.
- (SP-11) ALL SIGNS SHALL BE OFFSET SEVEN(7) FEET FROM THE EDGE OF PAVEMENT.
- (SP-12) THE TWO SIGNS FOR HARDESTY RD THAT ARE TO BE ATTACHED TO THE MEDIAN BARRIER WALL SHALL BE ATTACHED ACCORDING TO THE BASE PLATE DESIGN ON SHEET T004. BASE PLATE & ANCHOR BOLTS ARE INCLUDED IN THE PAY ITEM FOR THE REGULATORY OR WARNING SIGN ASSEMBLY.
- (SP-13) THE CONDUIT SHALL EXTEND INTO THE SIGN PIPE TWO(2) INCHES PAST THE TOP OF THE BASE PLATE. ALL JOINTS IN THE CONDUIT MUST BE WATERPROOF SEALED. THE CONDUIT SHALL BE SECURELY ATTACHED TO THE MEDIAN BARRIER.

| REVISIONS |                                                   |        |
|-----------|---------------------------------------------------|--------|
| REV. NO.  | DESCRIPTION                                       | DATE   |
| 1         | UPDATED JPN NUMBER, UPDATE PAY QUANTITIES & NOTES | 8/5/16 |

| PAY QUANTITY SCHEDULE |          |                                         |      |          |
|-----------------------|----------|-----------------------------------------|------|----------|
| 0300 TRAFFIC CONTROL  |          |                                         |      |          |
| PAY ITEM              | CODE NO. | DESCRIPTION                             | UNIT | QUANTITY |
| 880(J)                | 8905     | CONSTRUCTION TRAFFIC CONTROL (TC-25,84) | LSUM | 1.00     |

| PAY QUANTITY SCHEDULE         |          |                                                       |      |          |
|-------------------------------|----------|-------------------------------------------------------|------|----------|
| 0301 TRAFFIC SIGNAL & SIGNING |          |                                                       |      |          |
| PAY ITEM                      | CODE NO. | DESCRIPTION                                           | UNIT | QUANTITY |
| △ 802(B)                      | 8336     | 1 1/2" PVC SCH. 40 PLASTIC CONDUIT BORED (SP-13)      | LF   | 700.00   |
| △ 802(B)                      | 8338     | 1 1/2" PVC SCH. 40 PLASTIC CONDUIT TRENCHED (SP-13)   | LF   | 2,380.00 |
| △ 803(A)                      | 8067     | PULL BOX (SIZE III)                                   | EA   | 34.00    |
| △ 805(D)                      | 8756     | (PL)REMOVE & RESET EXISTING SIGNS (SP-10)             | EA   | 3.00     |
| 825(A)                        | 8559     | SIGNAL SYSTEM CONTROLLER UPGRADE (SP-7,8,9)           | EA   | 1.00     |
| 827                           | 8623     | SOLID STATE FLASHER CONTROLLER (TYPE II) (SP-1)       | EA   | 8.00     |
| 831                           | 8301     | 1 WAY 1SEC. ADJ. SIG. HD. S-22 (SP-2)                 | EA   | 16.00    |
| △ 834(A)                      | 8207     | 5/C TRAFFIC SIGNAL ELECTRICAL CABLE                   | LF   | 3,080.00 |
| 836                           | 8425     | REGULATORY OR WARNING SIGN ASSEMBLY (SP-3,4,5,6,7,12) | EA   | 8.00     |
| 850(A)                        | 8110     | SHEET ALUMINUM SIGNS (SP-6,11)(TS-34)                 | SF   | 128.00   |

| PAY QUANTITY SCHEDULE |          |              |      |          |
|-----------------------|----------|--------------|------|----------|
| 0640 CONSTRUCTION     |          |              |      |          |
| PAY ITEM              | CODE NO. | DESCRIPTION  | UNIT | QUANTITY |
| 641                   | 1552     | MOBILIZATION | LSUM | 1.00     |



| SUMMARY OF PAY QUANTITIES & NOTES |    |      |
|-----------------------------------|----|------|
| Drawn                             | JF | 6/14 |
| Design                            | JF | 6/14 |
| Checked                           | AA | 6/14 |
| TRAFFIC ENGINEERING               |    |      |